

RNAV (GPS) RWY 23

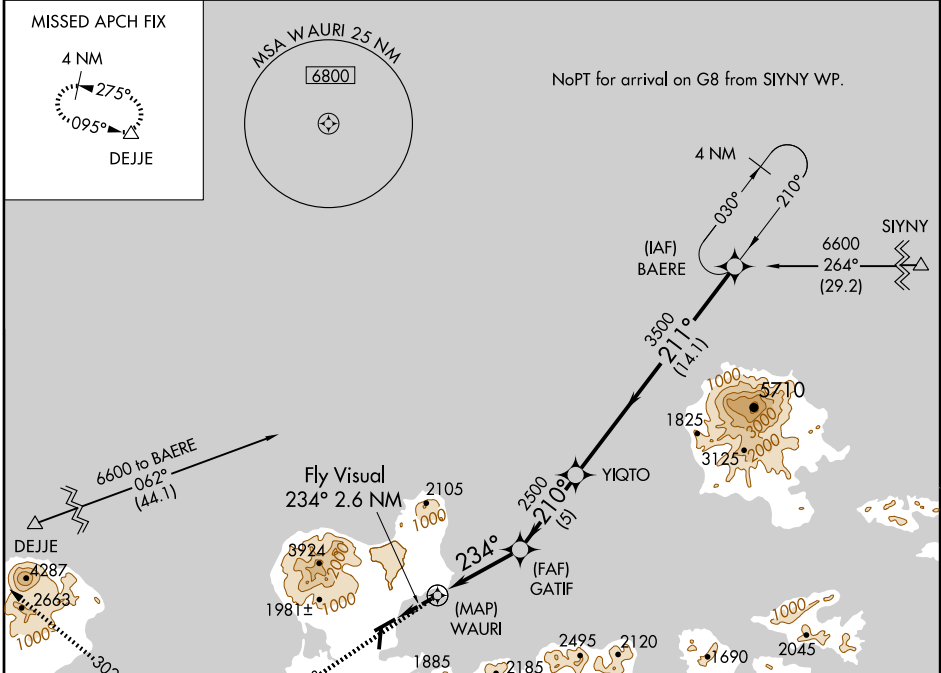
ADAK (ADK)(PADK)

APP CRS 234°	Rwy Idg 7790
	TDZE 15
	Apt Elev 18

⚠ Circling not authorized at night.
⚠ DME/DME RNP-0.3 NA.

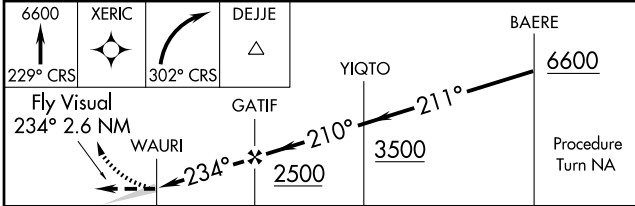
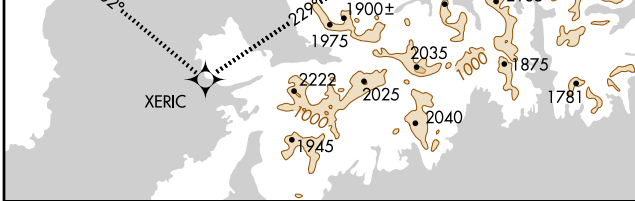
MISSED APPROACH: Climb to 6600 via 229° course to XERIC, then right turn via 302° course to DEJJE and hold.

AWOS-3 134.5	ANCHORAGE CENTER 126.4 254.3	CTAF 122.9 ⓪
------------------------	--	-------------------------------



AK, 11 FEB 2010 to 08 APR 2010

AK, 11 FEB 2010 to 08 APR 2010



CATEGORY	A	B	C	D
LNNAV MDA		1220-3	1205 (1300-3)	
CIRCLING	1220-3	1202 (1300-3)		1540-3 1522 (1600-3)

