

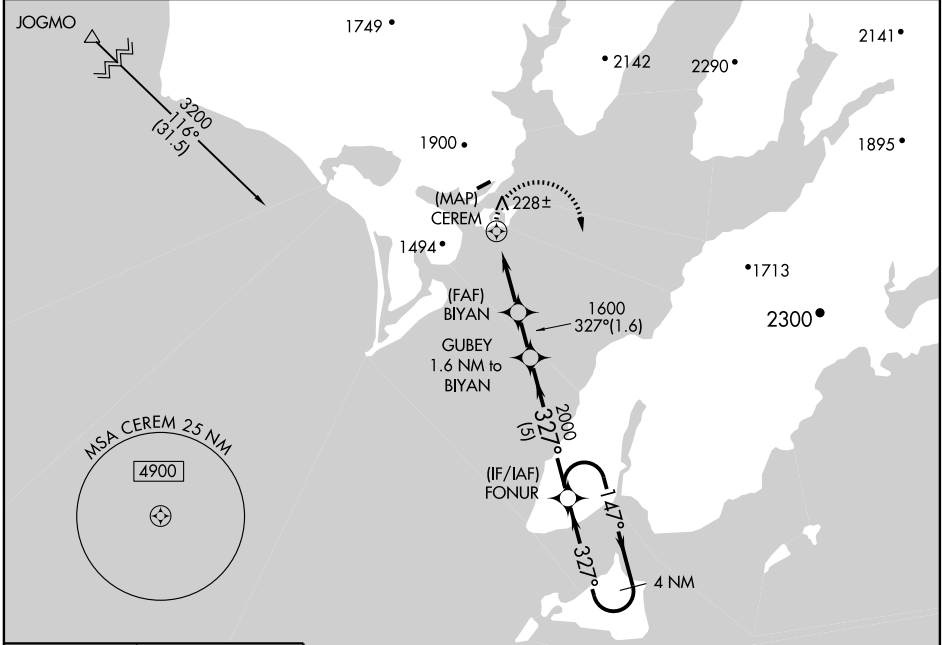
# RNAV (GPS)-A AKHIOK (AKK) (PAKH)

APP CRS <b>327°</b>	Rwy Idg TDZE Apt Elev	<b>N/A</b> <b>N/A</b> <b>44</b>
------------------------	-----------------------------	---------------------------------------

**▼** DME/DME RNP-0.3 NA. Procedure NA at night. Circling NA northwest of Rwy 4/22. If local altimeter setting not received, use Kodiak altimeter setting and increase all MDAs 800 feet.

**▲** MISSED APPROACH: Climbing right turn to 3200 direct FONUR and hold.

ASOS <b>118.325</b>	ANCHORAGE CENTER <b>125.1 281.4</b>	UNICOM <b>122.8 (CTAF)</b> <b>0</b>	KENAI RADIO <b>122.6</b>
------------------------	--	--	-----------------------------



AK, 29 JUL 2010 to 23 SEP 2010

AK, 29 JUL 2010 to 23 SEP 2010

